



JAMA. 2017 Jul 11; 318(2): 156–166.

PMCID: PMC5541330

Published online 2017 Jul 11.

PMID: [28697252](#)

doi: 10.1001/jama.2017.7967: 10.1001/jama.2017.7967

## Association of Positive Airway Pressure With Cardiovascular Events and Death in Adults With Sleep Apnea

A Systematic Review and Meta-analysis

[Jie Yu](#), MD,<sup>1,2</sup> [Zien Zhou](#), MD,<sup>2,3</sup> [R. Doug McEvoy](#), MD,<sup>4</sup> [Craig S. Anderson](#), PhD,<sup>2,5,6</sup> [Anthony Rodgers](#), PhD,<sup>2</sup> [Vlado Perkovic](#), PhD,<sup>2</sup> and [Bruce Neal](#), PhD<sup>2,7,8</sup>

<sup>1</sup>Department of Cardiology, Peking University Third Hospital, Key Laboratory of Cardiovascular Molecular Biology and Regulatory Peptides, Ministry of Health, Key Laboratory of Molecular Cardiovascular Sciences, Ministry of Education, Beijing, People's Republic of China

<sup>2</sup>The George Institute for Global Health, Faculty of Medicine, UNSW Sydney, Sydney, New South Wales, Australia

<sup>3</sup>Department of Radiology, Ren Ji Hospital, School of Medicine, Shanghai Jiao Tong University, Shanghai, People's Republic of China

<sup>4</sup>Adelaide Institute for Sleep Health, Flinders University, Adelaide, South Australia, Australia

<sup>5</sup>The George Institute China, Peking University Health Science Center, Beijing, People's Republic of China

<sup>6</sup>Neurology Department, Royal Prince Alfred Hospital, Sydney Health Partners, Sydney, New South Wales, Australia

<sup>7</sup>The Charles Perkins Centre, University of Sydney, Sydney, New South Wales, Australia

<sup>8</sup>Division of Epidemiology and Biostatistics, Imperial College London, London, United Kingdom

✉Corresponding author.

### Article Information

**Corresponding Author:** Bruce Neal, PhD, The George Institute for Global Health, Faculty of Medicine, UNSW Sydney, Sydney, New South Wales, Australia 2050 ([bneal@georgeinstitute.org.au](mailto:bneal@georgeinstitute.org.au)).

**Accepted for Publication:** June 12, 2017.

**Author Contributions:** Drs Zhou and Yu had full access to all of the data in the study and takes responsibility for the integrity of the data and the accuracy of the data analysis. Drs Zhou and Yu contributed equally to the work.

*Concept and design:* Neal.

*Acquisition, analysis, or interpretation of data:* Yu, Zhou, McEvoy, Anderson, Rodgers, Perkovic, Neal.

*Drafting of the manuscript:* Yu, Neal, Zhou.

*Critical revision of the manuscript for important intellectual content:* Yu, Zhou, McEvoy, Anderson, Rodgers, Perkovic, Neal.

*Statistical analysis:* Zhou.

*Administrative, technical, or material support:* Yu, McEvoy, Anderson, Neal.

*Supervision:* Rodgers, Neal.

**Conflict of Interest Disclosures:** All authors have completed and submitted the ICMJE Form for Disclosure of Potential Conflicts of Interest. Dr Anderson reports receipt of personal fees from Takeda China and Boehringer Ingelheim. Dr Perkovic reports receipt of a grant from Abbvie, Janssen, National Health and Medical Research Council of Australia (NHMRC), and Baxter; personal fees from Servier for speaking at a scientific symposia; other from Astellas, GSK, Bristol-Myers Squibb, Janssen, Boehringer Ingelheim, Pharmalink, Relypsa, Merck, Gilead, Baxter, Novartis, and Durect, as member of a steering committee or advisory board; and other from Bayer, Pfizer, Astra Zeneca, Novo Nordisk, Baker ISI, and Sanofi for speaking at a scientific symposia. Dr Neal reports receipt of a grant and personal fees from Janssen. Dr Neal (principal research), Dr Anderson (senior principal research practitioner), and Dr McEvoy (fellowship) report receipt of support from the NHMRC and being investigators on the SAVE trial (supported by grants from Philips Respironics and NHMRC [APP1060078 and APP1006501]) with supplementary grants and/or equipment from ResMed and Fisher&Paykel. No other disclosures are reported.

**Funding/Support:** This study was supported by a program grant from the National Health and Medical Research Council (NHMRC) of Australia (APP1052555).

**Role of the Funder/Sponsor:** NHMRC had no involvement in the design or conduct of the study; collection, management, analysis, or interpretation of the data; preparation, review, or approval of the manuscript; or decision to submit the manuscript for publication.

Received 2016 Nov 30; Accepted 2017 Jun 12.

[Copyright](#) 2017 American Medical Association. All Rights Reserved.

## Key Points

---

### Question

Does the use of positive airway pressure (PAP) to treat sleep apnea reduce risk of cardiovascular events and death?

### Findings

In this meta-analysis of 10 randomized clinical trials including 7266 patients, there was no significant association of PAP compared with no treatment (or sham PAP) on a composite outcome of acute coronary syndrome events, stroke, or vascular death (relative risk, 0.77 [95% CI, 0.53-1.13]). There was also no significant association with individual outcomes or all-cause death.

### Meaning

Although there are other benefits of PAP use for treating sleep apnea, these findings do not support treatment with a goal of preventing cardiovascular outcomes or improving survival.

## Abstract

---

### Importance

Sleep apnea (obstructive and central) is associated with adverse cardiovascular risk factors and increased risks of cardiovascular disease. Positive airway pressure (PAP) provides symptomatic relief, whether delivered continuously (CPAP) or as adaptive servo-ventilation (ASV), but the associations with cardiovascular outcomes and death are unclear.

### Objective

To assess the association of PAP vs control with cardiovascular events and death in patients with sleep apnea.

### Data Sources and Study Selection

MEDLINE, EMBASE, and the Cochrane Library were systematically searched from inception date to March 2017 for randomized clinical trials that included reporting of major adverse cardiovascular events or deaths.

### Data Extraction and Synthesis

Two authors independently extracted data using standardized forms. Summary relative risks (RRs), risk differences (RDs) and 95% CIs were obtained using random-effects meta-analysis.

### Main Outcomes and Measures

The main outcomes were a composite of acute coronary syndrome (ACS) events, stroke, or vascular death (major adverse cardiovascular events); cause-specific vascular events; and death.

### Results

The analyses included data from 10 trials (9 CPAP; 1 ASV) of patients with sleep apnea (N = 7266; mean age, 60.9 [range, 51.5 to 71.1] years; 5847 [80.5%] men; mean [SD] body mass index, 30.0 [5.2]). Among 356 major adverse cardiovascular events and 613 deaths recorded, there was no significant association of PAP with major adverse cardiovascular events (RR, 0.77 [95% CI, 0.53 to 1.13];  $P = .19$  and RD,  $-0.01$  [95% CI,  $-0.03$  to  $0.01$ ];  $P = .23$ ), cardiovascular death (RR, 1.15 [95% CI, 0.88 to 1.50];  $P = .30$  and RD  $-0.00$  [95% CI,  $-0.02$  to  $0.02$ ];  $P = .87$ ), or all-cause death (RR, 1.13 [95% CI, 0.99 to 1.29];  $P = .08$  and RD,  $0.00$  [95% CI,  $-0.01$  to  $0.01$ ];  $P = .51$ ). The same was true for ACS, stroke, and heart failure. There was no evidence of different associations for CPAP vs ASV (all  $P$  value homogeneity  $>.24$ ), and meta-regressions identified no associations of PAP with outcomes for different levels of apnea severity, follow-up duration, or adherence to PAP (all  $P$  values  $>.13$ ).

### Conclusions and Relevance

The use of PAP, compared with no treatment or sham, was not associated with reduced risks of cardiovascular outcomes or death for patients with sleep apnea. Although there are other benefits of treatment with PAP for sleep apnea, these findings do not support treatment with PAP with a goal of prevention of these outcomes.

### Introduction

---

Sleep apnea is characterized by repetitive episodes of shallow breathing or apnea during sleep. Sleep apnea can result in episodic hypoxemia and is associated with elevated blood pressure, oxidative stress, inflammation, and hypercoagulation. Observational studies indicate sleep apnea is associated with elevated risk of serious cardiovascular events, including coronary artery disease, heart failure, stroke, and sudden death.

Positive airway pressure (PAP) is an established treatment for the symptoms of sleep apnea and has been reported to lead to modest decreases in blood pressure among affected patients. The 2014 American Heart Association/American Stroke Association (AHA/ASA) guidelines for the use of PAP advise that treatment should be considered for patients with acute ischemic stroke or transient ischemic attack. Several trials have reported the associations of PAP with cardiovascular outcomes, but individual trial results have been imprecise, and there remains uncertainty about the associations of PAP with vascular disease and death. Although prior meta-analyses exist, none included the large Sleep Apnea Cardiovascular Endpoints

(SAVE) trial, which adds substantive new data and insights into the likely effects of PAP on major clinical outcomes. The purpose of this systematic review and meta-analysis is to evaluate the association of PAP with cardiovascular events and death in adults with sleep apnea.

## Methods

---

### Search Strategy and Selection Criteria

A systematic search of the scientific literature was done according to the Preferred Reporting Items for Systematic Review and Meta-Analysis (PRISMA) statement for the conduct of meta-analyses of intervention studies. The searches included MEDLINE via Ovid (from January 1, 1946, to March 2017), EMBASE (from January 1, 1974, to March 2017), and the Cochrane Library database (Cochrane Central Register of Controlled Trials, no date restriction) using relevant text words and Medical Subject Headings that consisted of terms relating to *randomized trial* and *sleep apnea* (see the eAppendix in the [Supplement](#) for detailed search strategy). The search was limited to randomized clinical trials (RCTs) but without language restriction. Additionally, reference lists from trials, review articles, and reports were manually scanned to identify any other relevant data (including conference abstracts). The clinicaltrials.gov website was searched for RCTs that were registered as completed but not yet published.

### Trial Inclusion Criteria

All RCTs assessing the association of PAP compared with standard care (or sham PAP) among adults (aged  $\geq 18$  years) with obstructive sleep apnea ([OSA](#)) or central sleep apnea ([CSA](#)) were potentially eligible for inclusion. Duplicate reports, trials that lasted 12 weeks or less, trials with less than 100 patient-years of follow-up per randomized group, and trials that did not report on outcomes of interest (cardiovascular events or death) were excluded. We also excluded scientific reports that presented pooled trial data for which the individual trials could not be identified to prevent double counting.

### Study Selection and Data Extraction

The review of potentially eligible scientific reports identified by the searches was completed by 2 authors (J.Y. and Z.Z.) to identify reports for review in full text. Each full-text article was then reviewed for eligibility by these authors and, for each included study, data were extracted independently and in duplicate using a standardized electronic form. Any disagreement in extracted data was settled by consultation. Data sought were the first author, year of publication, country where the study was conducted, number of participants, percent of male participants, mean age of participants, inclusion criteria for OSA or CSA, intervention type, participant adherence, follow-up duration, cardiovascular events, and deaths (including cardiovascular death, noncardiovascular death, and all-cause death).

Two investigators (J.Y. and Z.Z.) also judged the quality of each included trial according to the Cochrane Collaboration's tool for assessing risk of bias. There were 7 quality items assessed: (1) random sequence generation, (2) allocation sequence concealment, (3) blinding of participants and personnel, (4) blinding of outcome assessment, (5) completeness of outcome data, (6) selective reporting, and (7) other sources of bias, which were each classified as low, unclear, or high.

### Outcomes

The composite outcomes of interest were major adverse cardiovascular events (cardiovascular death, nonfatal acute coronary syndrome [[ACS](#)], and nonfatal stroke) and major adverse cardiovascular events with hospitalization for unstable angina.

The cause-specific outcomes were fatal or nonfatal ACS, fatal or nonfatal stroke, hospitalization for unstable angina, and fatal or hospitalized heart failure. All-cause death, cardiovascular death, and noncardiovascular death were also studied.

Some studies reported intermediate outcomes: systolic and diastolic blood pressure, body mass index (BMI; calculated as weight in kilograms divided by height in meters squared), blood lipids (high-density lipoprotein cholesterol, low-density lipoprotein cholesterol, total cholesterol, and triglycerides), fasting glucose, glycated hemoglobin A<sub>1c</sub>, and scores from the Epworth Sleepiness Scale (ESS), Sleep Apnea Quality of Life Index (SAQLI), European Quality of Life-5 Dimensions (EQ-5D), the 36-item Short-Form (SF-36), and the Hospital Anxiety and Depression Scale (HADS).

## Analysis

The numbers of dichotomous outcomes were summarized and mean values with standard deviations were collated for continuous outcomes. Summary relative risks (RRs) and risk differences (RDs) with 95% CIs were estimated for primary and secondary outcomes using the DerSimonian and Laird random-effects model. For continuous parameters, weighted mean differences were calculated using end-of-trial mean (SD) values and treatment group size. A 2-sided *P* value of less than or equal to .05 was deemed significant. The percentage of variability across the pooled estimates attributable to heterogeneity beyond chance was estimated using the *I*<sup>2</sup> statistic and by calculating the *P* value for heterogeneity. An *I*<sup>2</sup> statistic was considered to reflect low likelihood (0%-25%), moderate likelihood (26%-75%), and high likelihood (76%-100%) of differences beyond chance, as was a *P* value of less than or equal to .05 for heterogeneity. Where there was a moderate or high likelihood of differences beyond chance, sensitivity analyses were done excluding individual studies to try and obtain an understanding of the reasons for the differences. Random-effects meta-regression analyses were used to investigate the associations of length of follow-up, adherence to randomized treatment, and apnea-hypopnea index with the observed RR for each trial. Subgroup analyses were done by grouping trials according to adherence to PAP (<4 vs ≥4 h/d), type of sleep apnea (OSA vs CSA), type of intervention (CPAP vs ASV), and whether vascular outcomes or death were prespecified outcomes. Evidence of publication bias was sought using the Egger regression test for funnel asymmetry in addition to visual inspection of the funnel plots. Statistical analyses were performed with Stata, version 12.0.

## Results

---

### Search Results and Characteristics of Included Studies

The literature search yielded 5765 articles of which 103 were reviewed in full text ([Figure 1](#)). Of these, 10 RCTs (7266 patients [5683 OSA; 1583 CSA]) met inclusion criteria. Among these patients, 356 major adverse cardiovascular events, 635 major adverse cardiovascular events with hospitalization for unstable angina, and 613 deaths were reported. The majority of other studies identified by our search had less than 12 weeks of follow-up or less than 100 patient-years of follow-up per randomized group or did not report on the clinical outcomes of interest.

All trial results were published during or after 2010 except 1 trial in 2005 ([Table 1](#)). All studies except 2 were multicenter trials. Studies assessed the association of PAP (9 CPAP and 1 ASV) with standard care (9 studies) or sham PAP (1 study). Sample size ranged from 83 participants to 2717 participants (median follow-up range, 6 months to 68 months). Diagnosis of sleep apnea was based on conventional polysomnographic or polygraphic monitoring in all but 1 trial that used a home sleep study. Mean or median adherence to the intervention ranged between 1.4 hours per day and 6.6 hours per day.

The assessments of risk of bias (eFigure 1 in the [Supplement](#)) showed that only 1 trial included blinding of participants and personnel to the intervention, but all except 1 did blinded assessment of cardiovascular outcomes. Funnel plots and Egger regression tests identified no strong evidence of publication bias with just 1 significant result for major adverse cardiovascular events ( $P = .03$ ) (eFigure 5 in the [Supplement](#)).

### Association of PAP With Cardiovascular Outcomes and Death

There were no associations of PAP with major adverse cardiovascular events (RR, 0.77 [95% CI, 0.53 to 1.13;  $P = .19$ ] and RD,  $-0.01$  [95% CI,  $-0.03$  to 0.01;  $P = .23$ ]), major adverse cardiovascular events plus hospitalization for unstable angina (RR, 0.92 [95% CI, 0.71 to 1.20;  $P = .54$ ] and RD,  $-0.01$  [95% CI,  $-0.03$  to 0.01;  $P = .42$ ]), cardiovascular death (RR, 1.15 [95% CI, 0.88 to 1.50;  $P = .30$ ] and RD,  $-0.00$  [95% CI,  $-0.02$  to 0.02;  $P = .87$ ]), all-cause death (RR, 1.13 [95% CI, 0.99 to 1.29;  $P = .08$ ] and RD, 0.00 [95% CI,  $-0.01$  to 0.01;  $P = .51$ ]), or noncardiovascular death (RR, 0.85 [95% CI, 0.60 to 1.19;  $P = .33$ ] and RD,  $-0.00$  [95% CI,  $-0.01$  to 0.01;  $P = .51$ ]) ([Figure 2](#) and eTable 1 in the [Supplement](#)). Additionally, there were no associations of PAP with cause-specific outcomes of ACS (RR, 1.00 [95% CI, 0.65 to 1.55;  $P = .99$ ] and RD,  $-0.00$  [95% CI,  $-0.02$  to 0.01;  $P = .45$ ]), stroke (RR, 0.90 [95% CI, 0.66 to 1.21;  $P = .47$ ] and RD,  $-0.00$  [95% CI,  $-0.02$  to 0.01;  $P = .52$ ]), hospitalization for unstable angina (RR, 1.15 [95% CI, 0.89 to 1.49;  $P = .29$ ] and RD, 0.01 [95% CI,  $-0.01$  to 0.03;  $P = .21$ ]) or heart failure (RR, 1.03 [95% CI, 0.92 to 1.16;  $P = .60$ ] and RD,  $-0.00$  [95% CI,  $-0.01$  to 0.01;  $P = .87$ ]) ([Figure 3](#) and eTable 1 in the [Supplement](#)). The meta-regression analyses identified no association between the length of follow-up, adherence to PAP, baseline apnea-hypopnea index, and the relative risks of events reported for the individual trials ([Figure 4](#); eFigure 2 and eFigure 3 in the [Supplement](#)). There was some evidence of heterogeneity in trial results observed for the outcomes of major adverse cardiovascular events ( $I^2 = 34\%$ ) and major adverse cardiovascular events with hospitalization for unstable angina ( $I^2 = 35\%$ ), which was in part attributable to the extreme result of 1 small study (eFigure 4 in the [Supplement](#)). Tests of heterogeneity between subgroups of studies that included participants with OSA vs CSA showed no differences of associations for cardiovascular death ( $P = .45$ ), all-cause death ( $P = .33$ ), or noncardiovascular death ( $P = .73$ ) ([Figure 5](#)). There were no subgroup analyses that showed clear evidence of heterogeneity between subgroups of studies (all  $P$  values for homogeneity were  $>.09$ ), but the summary RR for the 4 trials that achieved at least 4 hours of adherence did have a 95% CI that just excluded unity (RR, 0.58 [95% CI, 0.34 to 0.99]).

### Association of PAP With Intermediate Outcomes

Data describing the associations of PAP with intermediate outcomes were diverse and inconsistently described. Comparable data reported by more than 1 study ranged in quantity from sleepiness reported by 5 studies ( $n = 4285$  participants) to total cholesterol reported by just 2 studies ( $n = 527$  participants) ([Table 2](#)). For the included studies, there was no association of treatment with PAP detected for blood pressure, BMI, any lipid parameter, glycemia, or EQ-5D, but associations were observed for sleepiness and a range of measures of physical and mental well-being. For several of these intermediate measures, there was evidence of differences in the association with PAP across the contributing trials ([Table 2](#)).

## Discussion

In this meta-analysis of RCTs, there were no significant associations between PAP treatment and a range of cardiovascular events or death, although anticipated associations with some other outcomes related to sleep apnea were observed. Based on the available evidence, it is reasonable to recommend PAP therapy for the improvement of symptoms in patients with OSA but not for protection against vascular disease or death. It is possible that an enhanced evidence base able to better explore effects in patient subgroups might identify protective effects of PAP treatment for some patient subsets. In the meantime, these data

emphasize the importance of proven therapies, such as blood pressure lowering, lipid lowering, and antiplatelet therapy in patients with sleep apnea, who should be treated according to established guidelines for patients at elevated cardiovascular risk.

Sleep apnea is highly prevalent and is associated with an elevated risk of serious vascular outcomes and multiple risk factors including hypertension, obesity, insulin resistance, and dyslipidemia. PAP has been reported to lower blood pressure, improve insulin resistance, enhance endothelial function, and increase insulin sensitivity, although improvements in glycemic control and BMI have not been demonstrated. Jointly, the observed associations of sleep apnea with vascular risk and the apparent beneficial effects of PAP on intermediate biomarkers provided a rationale for expecting that adequately powered trials of PAP would show beneficial effects on hard vascular outcomes.

There have been several reasons postulated for the failure of PAP trials to demonstrate protection against vascular outcomes. It is possible that the limited adherence to therapy in many trials was insufficient to drive protection, and there have been several reports of differential benefits of PAP in more vs less adherent patients derived from post hoc analyses. A weakness of these reports is that analyses based on nonrandomized comparisons may reflect confounding due to differences between adherent and nonadherent individuals rather than their use of PAP. The methodologically more robust meta-regression approach reported herein identified no association of adherence with the effectiveness of PAP for prevention of vascular disease, although statistical power to detect modest effects was low. Likewise, there was no heterogeneity detected between the associations observed in subgroups of trials that achieve adherence less than 4 vs 4 or more hours per night. The statistically significant benefit (RR, 0.58 [95% CI, 0.34 to 0.99]) observed for the major adverse cardiovascular events outcome in trials with at least 4 hours per night may be interpreted as indicating the importance of good adherence to achieving benefits with PAP. However, the absence of any comparable association for other outcomes, the post hoc nature of the subgroup analyses, and the multiple comparisons made also make chance a plausible explanation. The short follow-up duration of most trials may have given insufficient time for PAP to have affected vascular outcomes, although the meta-regression identified no association between follow-up time and the hazard ratio for PAP vs control in the contributing trials. It has been suggested that PAP may be ineffective in patients with advanced disease, but this has not been observed for other interventions targeting vascular conditions in which treatments have typically proven effective in primary and secondary prevention settings.

The absence of any significant association of PAP with intermediate markers of vascular risk in the trials included in this overview may explain the null associations of PAP with hard vascular outcomes. The disparity with earlier reports of protection for several intermediate markers of vascular risk might reflect the small and inconsistently reported benefits in the prior studies and interpretation influenced by publication bias. It is also possible that differences in the characteristics of participants included in the present systematic review and meta-analysis, compared with prior studies, may account for the discrepancies, and this warrants further investigation.

The positive association of PAP observed with the Epworth Sleepiness Scale (reported previously) provides reassurance that PAP was delivered with sufficient integrity, in these included trials, to deliver anticipated benefits. This overview also shows beneficial effects on anxiety, depression, and physical function (previously reported in the individual studies). These benefits are of importance to patients and support the use of PAP for treating sleep apnea even in the absence of evidence of vascular protection. Further investigation of the effects of PAP on these outcomes is warranted.

The inclusion of 2 trials of patients with predominantly central sleep apnea helped to increase statistical power to address questions about the associations of PAP treatment with outcomes, while concurrently enabling formal investigation for evidence of different associations of PAP treatment in patients with different types of sleep apnea. The absence of evidence of heterogeneity of the associations between PAP

treatment and outcomes across the obstructive sleep apnea and central sleep apnea subgroups, along with the absence of a significant association within either subgroup, strengthens the primary conclusion of no effect.

This study has several limitations. First, the summary data represent the available evidence from moderate-to-large-sized RCTs able to describe the association of PAP with vascular outcomes and death, but there are still relatively few events recorded. Most outcome events derived from a small number of studies, and many were from high-risk patient subsets. It is possible that more data might reveal moderate benefits of PAP that were beyond the power of this overview to detect, although the absence of improvement in intermediate risk markers makes this a low likelihood.

The second limitation, conversely, is that it is possible that additional data might reveal adverse effects since point estimates of the associations of PAP with vascular death and all-cause death were suggestive of harm rather than benefit.

Third, the participants in the contributing trials were mostly those without excessive sleepiness, and it may be that effects of PAP on vascular outcomes are restricted to patients with more severe symptomatology. However, it is difficult to envisage how this hypothesis could be tested in a trial because PAP treatment is indicated for most individuals with more severe symptomatology, and randomization to a control group would not be feasible.

An ongoing trial of CPAP following ACS ([NCT01335087](#)) and one of ASV in patients with heart failure ([NCT01128816](#)) will provide additional insight, but the practical complexity and cost associated with conducting PAP trials make it unlikely that substantial additional data will be forthcoming in the near future. If a new and very well-tolerated method of delivering PAP becomes available, this may be worth evaluating in another large trial since it remains possible that strong adherence may produce benefits. In the meantime, the evidence from these RCTs suggests that the association of sleep apnea with vascular outcomes and death, seen in observational studies, may represent disease processes that cannot be ameliorated by PAP delivered at the average intensity achieved in these clinical trials or by currently feasible methods in clinical practice.

## Conclusions

---

The use of PAP compared with no treatment or sham was not associated with reduced risks of cardiovascular outcomes or death for patients with sleep apnea. Although there are other benefits of treatment with PAP for sleep apnea, these findings do not support treatment with PAP with a goal of prevention of these outcomes.

## Notes

---

### Supplement.

eAppendix. Search Strategy

eFigure 1. Assessment of Risk of Bias Using Cochrane Collaboration Tool

eFigure 2. Random-Effects Meta-Regression of Selected Trial Characteristics on Risk Ratio of Major Adverse Cardiovascular Events Plus Hospitalization for Unstable Angina

eFigure 3. Random-Effects Meta-Regression of Selected Trial Characteristics on Risk Ratio of Cardiovascular Death



eFigure 4. Association of Positive Airway Pressure With Major Adverse Cardiovascular Events (MACE) and MACE Plus Hospitalization for Unstable Angina After Exclusion of Outlying Study Using Random-Effects Meta-Analysis

eFigure 5. Assessment of Publication Bias on Vascular Outcomes and Death

eTable 1. Individual Trial Data and Pooled Outcomes Using Random-Effects Model

eTable 2. Individual Trial Data and Pooled Outcomes in Subgroups Using Random-Effects Meta-Analysis

eReferences.

## Notes

---

### Abbreviations List

ACS	acute coronary syndrome
ASV	adaptive servo-ventilation
CPAP	continuous positive airway pressure
CSA	central sleep apnea
OSA	obstructive sleep apnea
PAP	positive airway pressure

## References

---

1. Marin JM, Agusti A, Villar I, et al. . Association between treated and untreated obstructive sleep apnea and risk of hypertension. *JAMA*. 2012;307(20):2169-2176. [PMCID: PMC4657563] [PubMed: 22618924]
2. Lavie L. Oxidative stress in obstructive sleep apnea and intermittent hypoxia—revisited—the bad ugly and good. *Sleep Med Rev*. 2015;20:27-45. [PubMed: 25155182]
3. Phillips CL, McEwen BJ, Morel-Kopp MC, et al. . Effects of continuous positive airway pressure on coagulability in obstructive sleep apnoea. *Thorax*. 2012;67(7):639-644. [PubMed: 22334531]
4. Somers VK, White DP, Amin R, et al. . Sleep apnea and cardiovascular disease: an American Heart Association/American College of Cardiology Foundation Scientific Statement from the American Heart Association Council for High Blood Pressure Research Professional Education Committee, Council on Clinical Cardiology, Stroke Council, and Council on Cardiovascular Nursing. *J Am Coll Cardiol*. 2008;52(8):686-717. [PubMed: 18702977]
5. Buchanan P, Grunstein R. Positive airway pressure treatment for obstructive sleep apnea-hypopnea syndrome In: Kryger MH, Roth T, Dement WC In: *Principles and Practice of Sleep Medicine*. 5th ed Philadelphia, PA: Elsevier Saunders; 2011:1233-1249
6. Guo J, Sun Y, Xue LJ, et al. . Effect of CPAP therapy on cardiovascular events and mortality in patients with obstructive sleep apnea. *Sleep Breath*. 2016;20(3):965-974. [PubMed: 26873722]
7. Bratton DJ, Gaisl T, Wons AM, Kohler M. CPAP vs mandibular advancement devices and blood pressure in patients with obstructive sleep apnea. *JAMA*. 2015;314(21):2280-2293. [PubMed: 26624827]

8. Kernan WN, Ovbiagele B, Black HR, et al. . Guidelines for the prevention of stroke in patients with stroke and transient ischemic attack: a guideline for healthcare professionals from the American Heart Association/American Stroke Association. *Stroke*. 2014;45(7):2160-2236. [PubMed: 24788967]
9. Parra O, Sánchez-Armengol A, Bonnin M, et al. . Early treatment of obstructive apnoea and stroke outcome. *Eur Respir J*. 2011;37(5):1128-1136. [PubMed: 20847081]
10. Minnerup J, Ritter MA, Wersching H, et al. . Continuous positive airway pressure ventilation for acute ischemic stroke. *Stroke*. 2012;43(4):1137-1139. [PubMed: 22198979]
11. Brown DL, Chervin RD, Kalbfleisch JD, et al. . Sleep apnea treatment after stroke (SATS) trial. *J Stroke Cerebrovasc Dis*. 2013;22(8):1216-1224. [PMCID: PMC3203337] [PubMed: 21784661]
12. Liberati A, Altman DG, Tetzlaff J, et al. . The PRISMA statement for reporting systematic reviews and meta-analyses of studies that evaluate healthcare interventions. *BMJ*. 2009;339:b2700. [PMCID: PMC2714672] [PubMed: 19622552]
13. Higgins JPT, Green S, eds. *Cochrane Handbook for Systematic Reviews of Interventions: Version 5.1.0*. London, England: Cochrane Collaboration; 2011.
14. Woodward M. *Epidemiology: Study Design and Data Analysis*. 2nd ed New York, NY: CRC Press; 2005.
15. Higgins JP, Thompson SG, Deeks JJ, Altman DG. Measuring inconsistency in meta-analyses. *BMJ*. 2003;327(7414):557-560. [PMCID: PMC192859] [PubMed: 12958120]
16. Bradley TD, Logan AG, Kimoff RJ, et al. . Continuous positive airway pressure for central sleep apnea and heart failure. *N Engl J Med*. 2005;353(19):2025-2033. [PubMed: 16282177]
17. Barbé F, Durán-Cantolla J, Sánchez-de-la-Torre M, et al. . Effect of continuous positive airway pressure on the incidence of hypertension and cardiovascular events in nonsleepy patients with obstructive sleep apnea. *JAMA*. 2012;307(20):2161-2168. [PubMed: 22618923]
18. Craig SE, Kohler M, Nicoll D, et al. . Continuous positive airway pressure improves sleepiness but not calculated vascular risk in patients with minimally symptomatic obstructive sleep apnoea. *Thorax*. 2012;67(12):1090-1096. [PubMed: 23111478]
19. Kushida CA, Nichols DA, Holmes TH, et al. . Effects of continuous positive airway pressure on neurocognitive function in obstructive sleep apnea patients. *Sleep*. 2012;35(12):1593-1602. [PMCID: PMC3490352] [PubMed: 23204602]
20. McMillan A, Bratton DJ, Faria R, et al. . Continuous positive airway pressure in older people with obstructive sleep apnoea syndrome (PREDICT). *Lancet Respir Med*. 2014;2(10):804-812. [PubMed: 25172769]
21. Cowie MR, Woehrle H, Wegscheider K, et al. . Adaptive servo-ventilation for central sleep apnea in systolic heart failure. *N Engl J Med*. 2015;373(12):1095-1105. [PMCID: PMC4779593] [PubMed: 26323938]
22. Huang Z, Liu Z, Luo Q, et al. . Long-term effects of continuous positive airway pressure on blood pressure and prognosis in hypertensive patients with coronary heart disease and obstructive sleep apnea. *Am J Hypertens*. 2015;28(3):300-306. [PubMed: 25125635]
23. Parra O, Sánchez-Armengol Á, Capote F, et al. . Efficacy of continuous positive airway pressure treatment on 5-year survival in patients with ischaemic stroke and obstructive sleep apnea. *J Sleep Res*. 2015;24(1):47-53. [PubMed: 25040553]

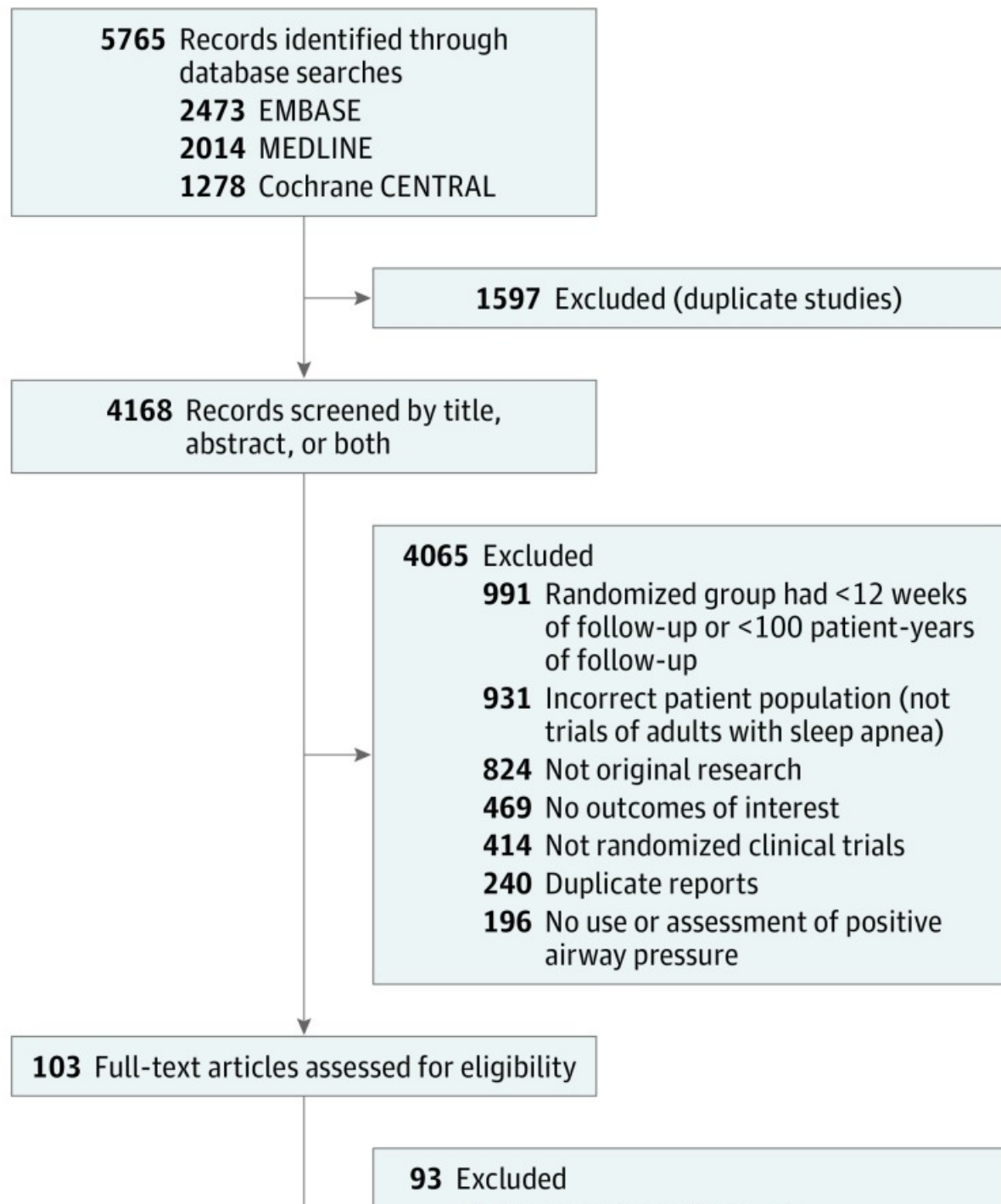
24. McEvoy RD, Antic NA, Heeley E, et al. . CPAP for prevention of cardiovascular events in obstructive sleep apnea. *N Engl J Med*. 2016;375(10):919-931. [PubMed: 27571048]
25. Peker Y, Glantz H, Eulenburg C, Wegscheider K, Herlitz J, Thunström E. Effect of positive airway pressure on cardiovascular outcomes in coronary artery disease patients with nonsleepy obstructive sleep apnea. *Am J Respir Crit Care Med*. 2016;194(5):613-620. [PubMed: 26914592]
26. Hoyos CM, Yee BJ, Wong KK, Grunstein RR, Phillips CL. Treatment of sleep apnea with CPAP lowers central and peripheral blood pressure independent of the time-of-day. *Am J Hypertens*. 2015;28(10):1222-1228. [PubMed: 25820243]
27. Lozano L, Tovar JL, Sampol G, et al. . Continuous positive airway pressure treatment in sleep apnea patients with resistant hypertension. *J Hypertens*. 2010;28(10):2161-2168. [PubMed: 20577130]
28. Martínez-García MA, Capote F, Campos-Rodríguez F, et al. . Effect of CPAP on blood pressure in patients with obstructive sleep apnea and resistant hypertension. *JAMA*. 2013;310(22):2407-2415. [PubMed: 24327037]
29. Gottlieb DJ, Punjabi NM, Mehra R, et al. . CPAP versus oxygen in obstructive sleep apnea. *N Engl J Med*. 2014;370(24):2276-2285. [PMCID: PMC4172401] [PubMed: 24918372]
30. Chirinos JA, Gurubhagavatula I, Teff K, et al. . CPAP, weight loss, or both for obstructive sleep apnea. *N Engl J Med*. 2014;370(24):2265-2275. [PMCID: PMC4138510] [PubMed: 24918371]
31. Lacasse Y, Godbout C, Sériès F. Independent validation of the Sleep Apnoea Quality of Life Index. *Thorax*. 2002;57(6):483-488. [PMCID: PMC1746356] [PubMed: 12037222]
32. Ryan CM, Bayley M, Green R, Murray BJ, Bradley TD. Influence of continuous positive airway pressure on outcomes of rehabilitation in stroke patients with obstructive sleep apnea. *Stroke*. 2011;42(4):1062-1067. [PubMed: 21372306]
33. Povitz M, Bolo CE, Heitman SJ, Tsai WH, Wang J, James MT. Effect of treatment of obstructive sleep apnea on depressive symptoms. *PLoS Med*. 2014;11(11):e1001762. [PMCID: PMC4244041] [PubMed: 25423175]
34. Batoool-Anwar S, Goodwin JL, Kushida CA, et al. . Impact of continuous positive airway pressure (CPAP) on quality of life in patients with obstructive sleep apnea (OSA). *J Sleep Res*. 2016;25(6):731-738. [PMCID: PMC5436801] [PubMed: 27242272]
35. Campos-Rodríguez F, Queipo-Corona C, Carmona-Bernal C, et al. . Continuous positive airway pressure improves quality of life in women with obstructive sleep apnea. *Am J Respir Crit Care Med*. 2016;194(10):1286-1294. [PubMed: 27181196]
36. Piepoli MF, Hoes AW, Agewall S, et al. . 2016 European Guidelines on cardiovascular disease prevention in clinical practice. *Eur Heart J*. 2016;37(29):2315-2381. [PMCID: PMC4986030] [PubMed: 27222591]
37. Qaseem A, Holty JE, Owens DK, Dallas P, Starkey M, Shekelle P. Management of obstructive sleep apnea in adults. *Ann Intern Med*. 2013;159(7):471-483. [PubMed: 24061345]
38. Expert Dyslipidemia Panel of the International Atherosclerosis Society Panel members An International Atherosclerosis Society Position Paper: global recommendations for the management of dyslipidemia—full report. *J Clin Lipidol*. 2014;8(1):29-60. [PubMed: 24528685]
39. Young T, Palta M, Dempsey J, Skatrud J, Weber S, Badr S. The occurrence of sleep-disordered breathing among middle-aged adults. *N Engl J Med*. 1993;328(17):1230-1235. [PubMed: 8464434]

40. Quan SF, Howard BV, Iber C, et al. . The Sleep Heart Health Study: design, rationale, and methods. *Sleep*. 1997;20(12):1077-1085. [PubMed: 9493915]
41. Bixler EO, Vgontzas AN, Lin HM, et al. . Prevalence of sleep-disordered breathing in women. *Am J Respir Crit Care Med*. 2001;163(3 Pt 1):608-613. [PubMed: 11254512]
42. Peppard PE, Young T, Barnet JH, Palta M, Hagen EW, Hla KM. Increased prevalence of sleep-disordered breathing in adults. *Am J Epidemiol*. 2013;177(9):1006-1014. [PMCID: PMC3639722] [PubMed: 23589584]
43. Heinzer R, Vat S, Marques-Vidal P, et al. . Prevalence of sleep-disordered breathing in the general population. *Lancet Respir Med*. 2015;3(4):310-318. [PMCID: PMC4404207] [PubMed: 25682233]
44. Pataka A, Riha RL. Continuous positive airway pressure and cardiovascular events in patients with obstructive sleep apnea. *Curr Cardiol Rep*. 2013;15(8):385. [PubMed: 23873341]
45. Pack AI, Gislason T. Obstructive sleep apnea and cardiovascular disease. *Prog Cardiovasc Dis*. 2009;51(5):434-451. [PubMed: 19249449]
46. Drager LF, Brunoni AR, Jenner R, Lorenzi-Filho G, Benseñor IM, Lotufo PA. Effects of CPAP on body weight in patients with obstructive sleep apnoea. *Thorax*. 2015;70(3):258-264. [PubMed: 25432944]
47. Peppard PE, Young T, Palta M, Dempsey J, Skatrud J. Longitudinal study of moderate weight change and sleep-disordered breathing. *JAMA*. 2000;284(23):3015-3021. [PubMed: 11122588]
48. Barbé F, Durán-Cantolla J, Capote F, et al. . Long-term effect of continuous positive airway pressure in hypertensive patients with sleep apnea. *Am J Respir Crit Care Med*. 2010;181(7):718-726. [PubMed: 20007932]
49. Martínez-Cerón E, Barquiel B, Bezos AM, et al. . Effect of continuous positive airway pressure on glycemic control in patients with obstructive sleep apnea and type 2 diabetes. *Am J Respir Crit Care Med*. 2016;194(4):476-485. [PubMed: 26910598]
50. Schwarz EI, Puhan MA, Schlatzer C, Stradling JR, Kohler M. Effect of CPAP therapy on endothelial function in obstructive sleep apnoea. *Respirology*. 2015;20(6):889-895. [PubMed: 26073295]
51. Iftikhar IH, Hoyos CM, Phillips CL, Magalang UJ. Meta-analyses of the association of sleep apnea with insulin resistance, and the effects of CPAP on HOMA-IR, adiponectin, and visceral adipose fat. *J Clin Sleep Med*. 2015;11(4):475-485. [PMCID: PMC4365462] [PubMed: 25700870]
52. Feng Y, Zhang Z, Dong ZZ. Effects of continuous positive airway pressure therapy on glycaemic control, insulin sensitivity and body mass index in patients with obstructive sleep apnoea and type 2 diabetes. *NPJ Prim Care Respir Med*. 2015;25:15005. [PMCID: PMC4373500] [PubMed: 25719929]
53. Mihaylova B, Emberson J, Blackwell L, et al. . The effects of lowering LDL cholesterol with statin therapy in people at low risk of vascular disease. *Lancet*. 2012;380(9841):581-590. [PMCID: PMC3437972] [PubMed: 22607822]
54. Stone NJ, Robinson JG, Lichtenstein AH, et al. . 2013 ACC/AHA guideline on the treatment of blood cholesterol to reduce atherosclerotic cardiovascular risk in adults. *Circulation*. 2014;129(25)(suppl 2):S1-S45. [PubMed: 24222016]
55. Sundström J, Arima H, Jackson R, et al. . Effects of blood pressure reduction in mild hypertension. *Ann Intern Med*. 2015;162(3):184-191. [PubMed: 25531552]
56. Sundström J, Arima H, Woodward M, et al. . Blood pressure-lowering treatment based on cardiovascular risk. *Lancet*. 2014;384(9943):591-598. [PubMed: 25131978]

57. Baigent C, Blackwell L, Collins R, et al. . Aspirin in the primary and secondary prevention of vascular disease. *Lancet*. 2009;373(9678):1849-1860. [PMCID: PMC2715005] [PubMed: 19482214]
58. Quan SF, Budhiraja R, Clarke DP, et al. . Impact of treatment with continuous positive airway pressure (CPAP) on weight in obstructive sleep apnea. *J Clin Sleep Med*. 2013;9(10):989-993. [PMCID: PMC3778188] [PubMed: 24127141]

## **Figures and Tables**

---

**Figure 1.**

[Open in a separate window](#)

**Flow Diagram of Literature Search**



**Table 1.****Characteristics of Included Randomized Clinical Trials**

Source	Baseline Characteristics						Key Inclusion Criteria	Intervention <sup>c</sup> Type and Duration, h/d	Follow-up, Median (Range) mo
	Men, No./Total No. (%)	Age, Mean (SD), y	BMI, Mean (SD) <sup>a</sup>	Current Smoker, No. (%)	AHI Events/h, Mean (SD) <sup>b</sup>	Sleep Apnea Diagnosis			
Bradley et al, 2005 (Canada)	249/258 (97)	63.4 (9.5)	29.1 (6.0)	NR	40.0 (16.0)	PSG	HF, CSA (AHI $\geq$ 15/h <sup>b</sup> , central apnea and hypopnea $\geq$ 50%)	CPAP, median, 3.6	24 (0-64)
Barbé et al, 2012 (Spain)	619/725 (85)	51.9 (11.0)	31.2 (4.9)	207 (29)	38.5, median	PSG or PG	AHI $\geq$ 20/h <sup>b</sup> , ESS $\leq$ 10 <sup>d</sup>	CPAP, median, 5.0	48 (0-64.6)
Craig et al, 2012 (United Kingdom and Canada)	305/391 (78)	57.7 (7.4)	32.4 (5.6)	45 (12)	NR	PG	ODI $\geq$ 7.5/h <sup>e</sup>	CPAP, median, 2.4	6
Kushida et al, 2012 (United States) <sup>c</sup>	719/1105 (65)	51.5 (12.2)	32.3 (7.2)	NR	40.1 (25.3)	PSG	AHI $\geq$ 10/h <sup>b</sup>	CPAP, mean, 3.8	6
McMillan et al, 2014 (United Kingdom)	229/278 (82)	71.1 (4.7)	33.8 (6.1)	14 (5)	28.7	PG	New obstructive sleep apnea	CPAP, median, 1.4	12
Cowie et al, 2015 (Europe and Australia)	1198/1325 (90)	69.5 (10.0)	28.5 (5.0)	NR	31.4 (3.0)	PSG or PG	HF, predominantly CSA (AHI $\geq$ 15/h with $\geq$ 50%)	ASV, mean, 3.7	31 (0-80)

[Open in a separate window](#)

Abbreviations: AHI, apnea-hypopnea index; ASV, adaptive servo-ventilation; BMI, body mass index; CPAP, continuous positive airway pressure; CSA, central sleep apnea; CVD, cardiovascular disease; ESS, Epworth Sleepiness Scale score; HBP, high blood pressure; HF, heart failure; NR, not reported; ODI, oxygen desaturation index; PG, cardiorespiratory or respiratory polygraphy; PSG, polysomnography (includes electroencephalogram assessment of sleep).

<sup>a</sup>Calculated as weight in kilograms divided by height in meters squared.



<sup>b</sup>AHI score range (0 [minimal] to  $\geq 30$  [severe]) is based on the number of apneas or hypopneas per hour.

<sup>c</sup>All trials used standard of care for control except Kushida (sham CPAP).

<sup>d</sup>ESS score range (0 [less severity] to 24 [greater severity] with a score higher than 10 indicating pathologic sleepiness) is based on a self-administered questionnaire of 8 questions to assess daytime sleepiness.

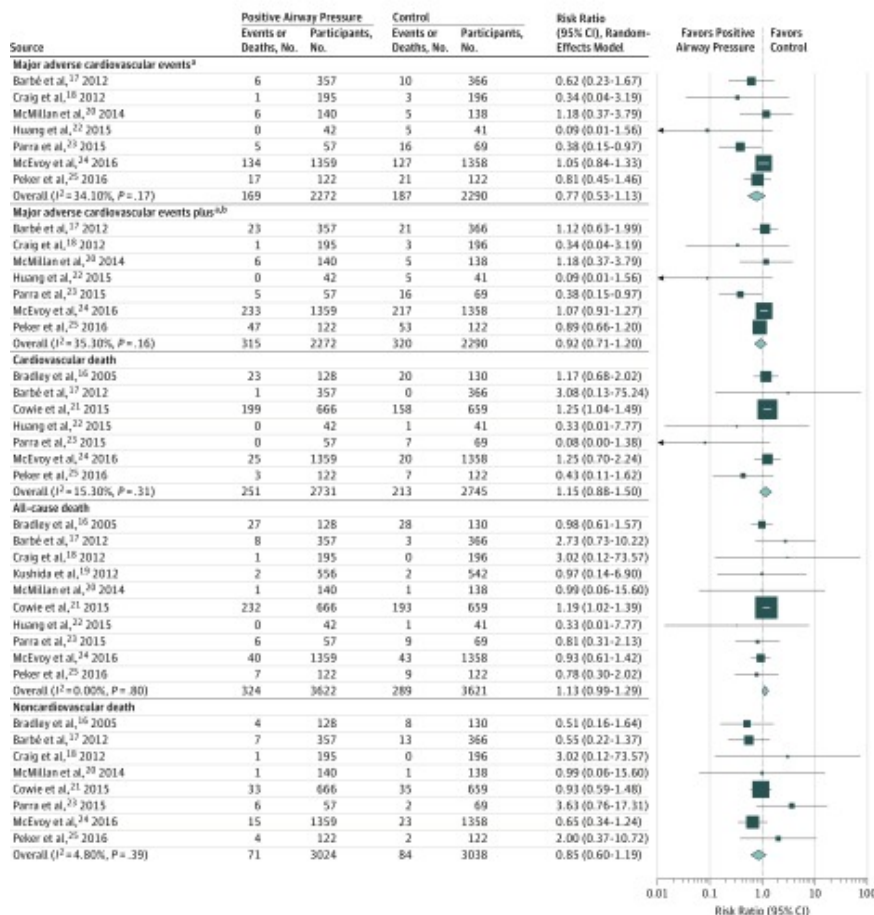
<sup>e</sup>Indicates the number of times per hour during oximetry recording that the blood oxygen saturation level declines by at least 4%.

<sup>f</sup>Reported values indicate interquartile range.

<sup>g</sup>Calculated from a screening sleep apnea device (ApneaLink, ResMed) that resulted in systematic underestimation of AHI.

<sup>h</sup>PG was restricted to nasal pressure and oximetry.

Figure 2.



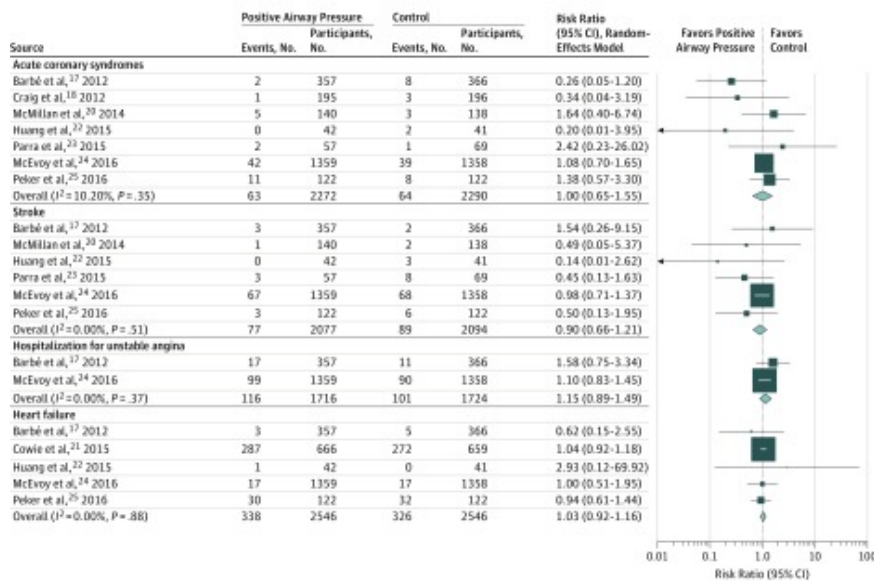
**Meta-analysis of the Association of Positive Airway Pressure With Cardiovascular Events and Death**

Box sizes are proportional to study weight (box center positioned at point estimate of effect). Horizontal lines indicate 95% CIs. The  $I^2$  value indicates the percentage of variability across the pooled estimates attributable to heterogeneity beyond chance (0%-25%, low likelihood; 26%-75%, moderate likelihood; 76%-100%, high likelihood), and the  $P$  value is for a test of heterogeneity across all studies ( $P$  value  $<.05$  indicates likely variation across pooled estimates beyond chance). If 0 events were reported for 1 cell in a comparison, a value of 0.5 was added to both cells automatically before calculating the risk ratio (95% CI). Risk ratio data are rounded to 2 decimal places but plotted to exact values.

<sup>a</sup>Major adverse cardiovascular events consist of cardiovascular death, nonfatal acute coronary syndrome, and nonfatal stroke.

<sup>b</sup>Plus indicates major adverse cardiovascular events in addition to hospitalization for unstable angina.

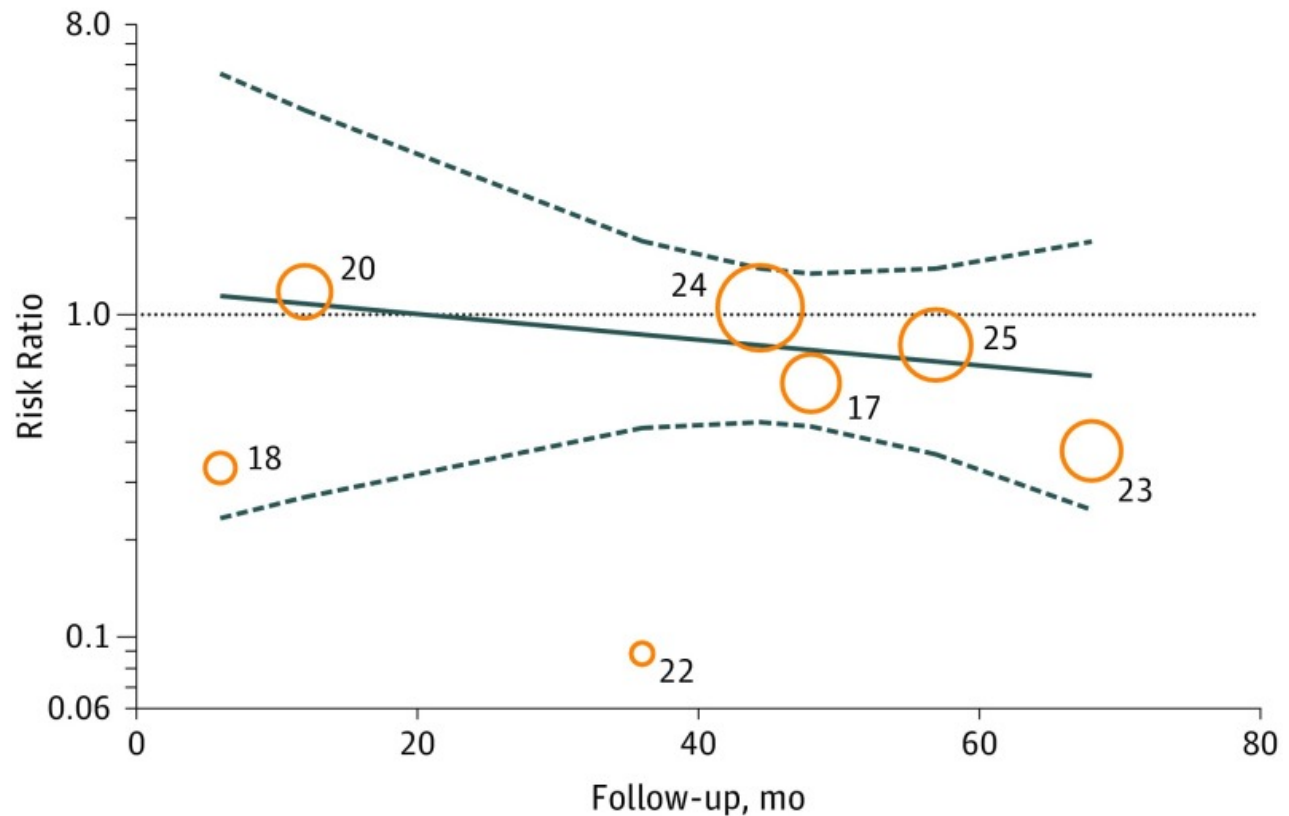
Figure 3.



**Meta-analysis of the Association of Positive Airway Pressure With Cardiovascular Outcomes**

Box sizes are proportional to study weight (box center positioned at point estimate of effect). Horizontal lines indicate 95% CIs. The  $I^2$  value indicates the percentage of variability across the pooled estimates attributable to heterogeneity beyond chance (0%-25%, low likelihood; 26%-75%, moderate likelihood; 76%-100%, high likelihood), and the  $P$  value is for a test of heterogeneity across all studies ( $P$  value  $<.05$  indicates likely variation across pooled estimates beyond chance). If 0 events were reported for 1 cell in a comparison, a value of 0.5 was added to both cells automatically before calculating the risk ratio (95% CI). Risk ratio data are rounded to 2 decimal places but plotted to exact values.



**Figure 4.****A** Major adverse cardiovascular events and length of follow-up**B** Major adverse cardiovascular events and adherence to positive airway pressure

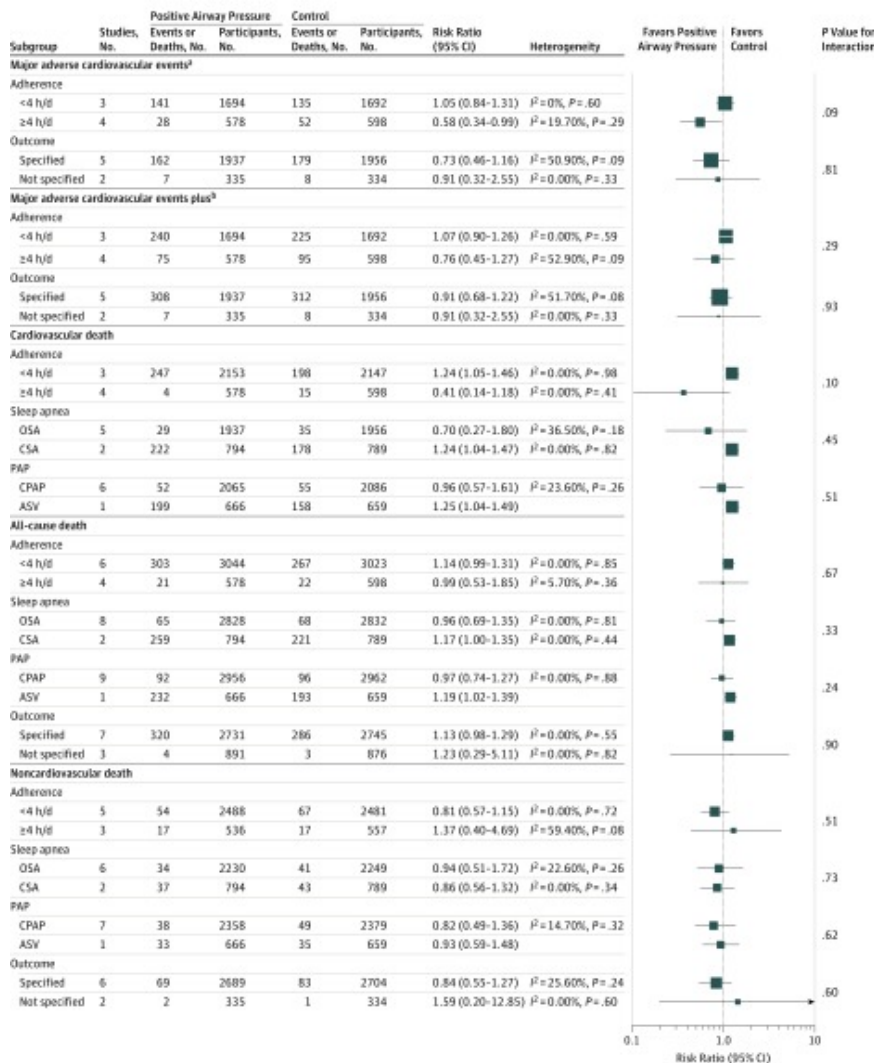
[Open in a separate window](#)

#### Meta-Regressions of Selected Trial Characteristics and Individual Trial Risk Ratios for Major Adverse Cardiovascular Events

A, Meta-regression of risk ratio (RR) for major adverse cardiovascular events according to length of follow-up with regression coefficient of  $-0.01$  [95% CI,  $-0.04$  to  $0.02$ ];  $P = .52$ . B, Meta-regression on RR of major adverse cardiovascular events according to adherence to intervention or control with regression coefficient of  $-0.11$  [ $-0.41$  to  $0.19$ ];  $P = .40$ . C, Meta-regression on RR of major adverse cardiovascular events according to apnea-hypopnea index at baseline with regression coefficient of  $-0.08$  [ $-0.19$  to  $0.04$ ];  $P = .13$ .

Major adverse cardiovascular events comprise cardiovascular death, nonfatal acute coronary syndrome, and nonfatal stroke. Circle sizes indicate the weight given to each study (centered on the intersection of the RR for major adverse cardiovascular events on the y-axis and the mean trial value of the metric of interest on the x-axis).

Figure 5.



**Association of Positive Airway Pressure With Vascular Outcomes and Deaths in Trial Subgroups**

Box sizes are proportional to study weight (box center positioned at point estimate of effect). The  $I^2$  value indicates the percentage of variability across the pooled estimates attributable to heterogeneity beyond chance (0%-25%, low likelihood; 26%-75%, moderate likelihood; 76%-100%, high likelihood), and the  $P$  value is for a test of heterogeneity across all studies. Abbreviations: ASV, adaptive servo-ventilation; CPAP, continuous positive airway pressure; CSA, central sleep apnea; OSA: obstructive sleep apnea; PAP, positive airway pressure.

<sup>a</sup>Major adverse cardiovascular events comprise cardiovascular death, nonfatal acute coronary syndrome, and nonfatal stroke.

<sup>b</sup>Plus indicates major adverse cardiovascular events in addition to hospitalization for unstable angina.





**Table 2.****Association of Positive Airway Pressure With Intermediate Outcomes**

Outcome	Reference No. for Included Studies	No. of Participants		Pooled Mean Difference, Random-Effects Model (95% CI) <sup>a</sup>	Heterogeneity $I^2$ , %	<i>P</i> Value
		PAP Group	Control Group			
Systolic blood pressure, mm Hg	18, 20, 22, 24	1510	1507	-0.20 (-2.29 to 1.89)	61.50	.05
Diastolic blood pressure, mm Hg	18, 20, 22, 24	1481	1477	-0.21 (-1.06 to 0.65)	0.00	.80
Body mass index <sup>b</sup>	17, 18, 20, 22	677	692	0.36 (-0.17 to 0.88)	0.00	.91
HDL cholesterol, mmol/L	18, 20	276	275	-0.02 (-0.11 to 0.07)	56.70	.13
LDL cholesterol, mmol/L	18, 20	266	267	0.02 (-0.14 to 0.19)	0.00	.46
Total cholesterol, mmol/L	18, 20	263	264	-0.05 (-0.23 to 0.14)	0.00	.60
Triglycerides, mmol/L	18, 20	274	276	0.04 (-0.14 to 0.23)	33.60	.22
Glucose, mmol/L <sup>c</sup>	18, 20	275	276	-0.09 (-0.40 to 0.23)	0.00	.95
Hemoglobin A <sub>1c</sub> , %	18, 20	268	267	-0.04 (-0.27 to 0.18)	0.00	.90
ESS score <sup>d</sup>	17, 19, 20, 22, 24	2169	2116	-1.92 (-2.79 to -1.06)	91.50	.00
SAQLI score <sup>e</sup>	18, 20	288	282	0.51 (0.31 to 0.70)	8.70	.29
EQ-5D score <sup>f</sup>	18, 24	1362	1336	0.00 (-0.02 to 0.03)	0.00	.32
Component scores						
SF-36 score, physical <sup>g</sup>	18, 23, 24	1446	1426	1.91 (-1.01 to 4.83)	68.00	.04
SF-36 score, mental <sup>g</sup>	18, 23, 24	1440	1416	1.73 (0.01 to 3.46)	50.70	.13
HADS score, anxiety <sup>h</sup>	20, 24	1334	1307	-0.40 (-0.67 to -0.13)	0.00	1.00
HADS score, depression <sup>h</sup>	20, 24	1334	1306	-0.70 (-1.09 to -0.31)	21.90	.26

Conventional unit conversion factors: to convert HDL cholesterol, LDL cholesterol, and total cholesterol to mg/dL, divide by 0.0259; for triglycerides to mg/dL, divide by 0.0113; for glucose to mg/dL, divide by 0.0555.

Abbreviations: EQ-5D, European Quality of Life-5 Dimensions questionnaire; ESS, Epworth Sleepiness Scale score; HADS, Hospital Anxiety and Depression Scale; HDL, high-density lipoprotein; LDL, low-density lipoprotein; SAQLI, Sleep Apnea Quality of Life Index; SF-36, 36-Item Short-Form Health.

<sup>a</sup>Outcomes were pooled using random-effects models.

<sup>b</sup>Calculated as weight in kilograms divided by height in meters squared.

<sup>c</sup>Indicates fasting glucose.

<sup>d</sup>ESS (range, 0 [less severity] to 24 [greater severity] with a score >10 indicating pathologic sleepiness) is a self-administered questionnaire to assess daytime sleepiness.

<sup>e</sup>SAQLI (range, 1 [worse] to 7 [better quality of life]) is a disease-specific instrument to evaluate health-related quality of life (daily functioning, social interactions, emotional functioning, and symptoms) in OSA patients in clinical trials of CPAP.

<sup>f</sup>EQ-5D (range, 1 [fewer] to 3 [more problems across 5 categories]) assesses quality of life.

<sup>g</sup>SF-36 (range, 0 [lower] to 100 [higher health-related quality of life]) assesses 8 health concepts (physical functioning, bodily pain, role limitations due to physical health problems, role limitations due to personal or emotional problems, emotional well-being, social functioning, energy vs fatigue, and general health perceptions).

<sup>h</sup>HADS (range, 0 [less] to 21 [more symptoms]) assesses anxiety and depression.